

75" Outdoor Brandview Single and Dual Screen Digital Signage

Elevating Outdoor Engagement with Single & Dual Screen High-Performance Displays for Maximum Impact



HARDWARE TOP FEATURES



HARDWARE TOP FEATURES



IP65 Rated

Engineered to withstand outdoor conditions, the unit is protected from dust, water, and environmental elements, ensuring long-lasting durability.



High Brightness 3500-4000 nits

The ultra-bright display ensures excellent visibility in direct sunlight, while the built-in ambient sensor automatically adjusts screen brightness for optimal clarity.



Outdoor Rated Antenna for WiFi or 5G Connectivity

Equipped with a weather-resistant antenna, this signage offers reliable connectivity for WiFi or 5G, ensuring uninterrupted operation and content updates.



Advanced Lamination Glass with Maximum UV Filter

The display is protected by specially laminated glass that filters UV rays, reducing glare and enhancing screen durability for clear visibility.



Optional IR Touch Available

For interactive applications, the optional infrared touch feature adds versatility, allowing for an engaging touch-screen experience.



Built-in Speakers

Integrated speakers provide clear audio, making it easy to deliver multimedia content effectively without the need for additional sound systems.



Optional Removable PC or Android

Customize your setup with a choice of a removable PC or Android system, providing flexibility and easy upgrades based on your requirements.



Multiple Input Ports (HDMI, USB)

Featuring various input ports like HDMI and USB, the unit supports a wide range of multimedia devices, allowing for seamless content integration.



Mounting Base/Stand

Designed for stable installation, the unit comes with a robust mounting base or stand, ensuring secure placement in any location.



Full Architectural Site Drawing for Installation

A comprehensive architectural drawing is provided to assist in the proper installation and setup, ensuring a flawless experience.



Optional Installation Service Available

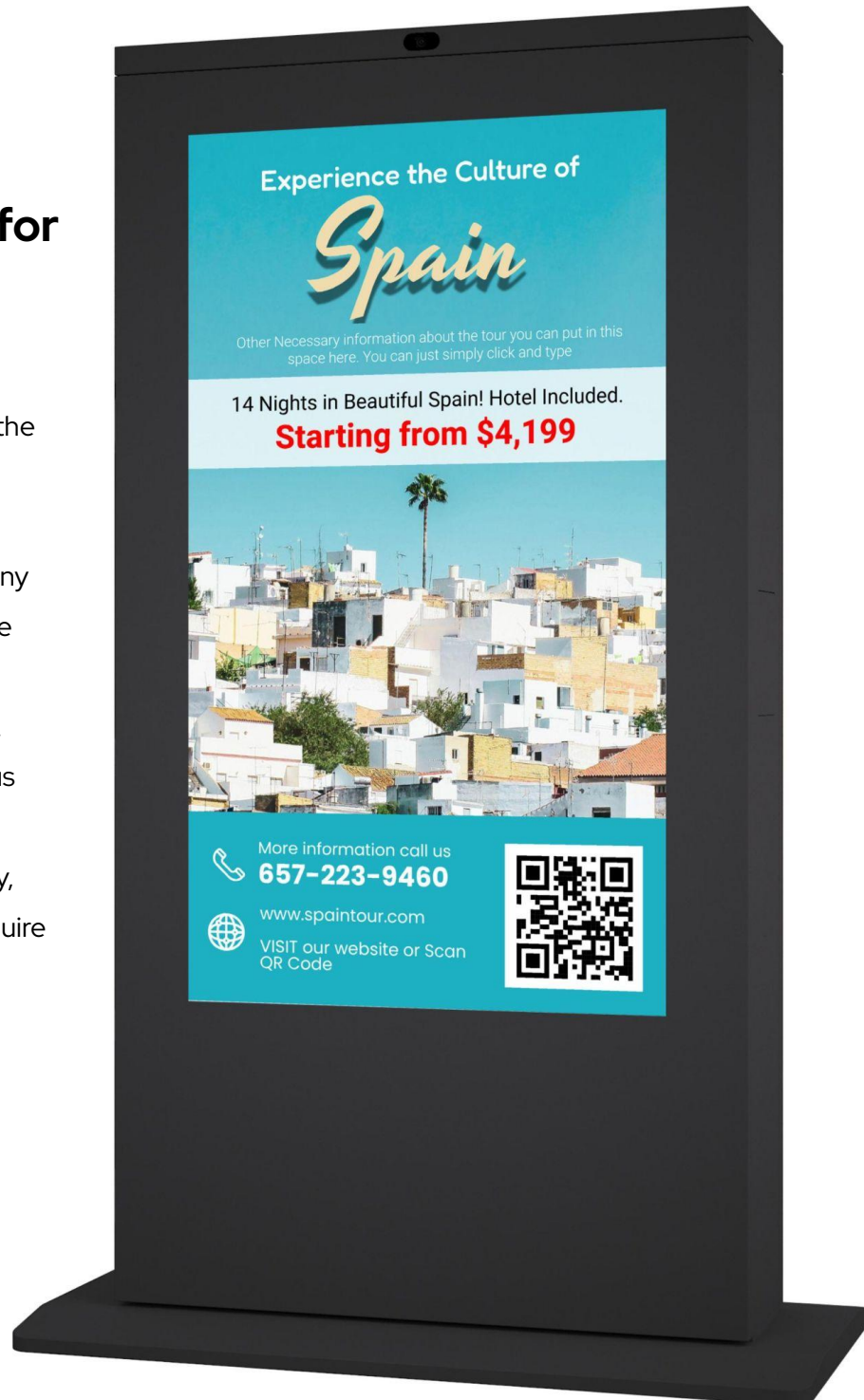
Professional installation services can be arranged, providing end-to-end support to ensure your digital signage is expertly deployed and ready to use.

PRISM | Hardware Brochure

Outdoor Rated Antenna for WiFi or 5G Connectivity

This digital signage is outfitted with a robust, outdoor-rated antenna designed to withstand the elements while providing reliable connectivity options for both WiFi and 5G networks.

Engineered for uninterrupted performance in any weather condition, the antenna ensures that the display remains connected, enabling seamless content updates and real-time communication. Whether for remote management or continuous content delivery, this weatherproof antenna guarantees stable and dependable connectivity, making it ideal for outdoor installations that require consistent network access.





Advanced Lamination Glass with Maximum UV Filter

This display is safeguarded by advanced laminated glass featuring a high-performance UV filter, specifically designed to block harmful ultraviolet rays. This protective layer not only reduces glare for improved screen visibility in direct sunlight but also enhances the overall durability of the display, shielding it from potential damage caused by prolonged sun exposure. The combination of UV filtration and robust lamination ensures crystal-clear viewing while extending the lifespan of the screen, making it ideal for outdoor applications where clarity and longevity are critical.



Outdoor-Ready with IP65 Rating

Designed to thrive in even the toughest outdoor environments, this unit boasts an IP65 rating, offering superior protection against dust, water, and harsh weather conditions. Whether it's rain, wind, or dust, this rugged display is built to endure and perform optimally in a variety of settings. Its advanced engineering ensures long-lasting durability, making it the perfect solution for outdoor installations where reliability and resistance to environmental elements are essential.

High Brightness 3500-4000 nits with Ambiance Sensor

Featuring an ultra-bright display with an impressive brightness range of 3500-4000 nits, this digital signage guarantees exceptional visibility, even in direct sunlight. Perfect for outdoor applications, the screen maintains crystal-clear content delivery no matter the lighting conditions. The integrated ambiance sensor further enhances user experience by automatically adjusting the screen's brightness based on the surrounding light levels, ensuring the display is always optimized for maximum clarity and energy efficiency. This smart technology provides seamless performance day or night, adapting effortlessly to its environment.



Optional Infrared Touch for Enhanced Interactivity

For users seeking a more dynamic and engaging experience, this display offers an optional infrared (IR) touch feature. Perfect for interactive applications, the IR touch technology enables seamless touch-screen functionality, adding a layer of versatility to the signage. Whether used for wayfinding, customer engagement, or self-service kiosks, this optional feature transforms the display into an interactive solution that enhances user interaction and creates a more immersive experience, making it ideal for a wide range of industries and environments.





Optional Removable PC or Android

Tailor your display to suit your specific needs with the option of a removable PC or Android system. This feature provides flexibility by allowing you to choose the operating system that best fits your application, whether for advanced computing tasks or simple, user-friendly interfaces. The removable design ensures easy access for upgrades or maintenance, enabling you to update or swap out hardware effortlessly as your requirements evolve. This customizable option makes it easy to future-proof your setup, offering adaptability and convenience for various use cases.

Built-In Speakers for High-Quality Audio

This display comes equipped with integrated speakers, delivering crisp and clear audio to complement your visual content. With no need for additional external sound systems, these built-in speakers ensure that multimedia presentations, advertisements, or announcements are heard as effectively as they are seen. Whether for promotional videos, informational broadcasts, or interactive applications, the high-quality audio enhances the overall experience, providing a complete multimedia solution in a single, streamlined unit.



Comprehensive Architectural Site Drawing for Seamless Installation

To facilitate a flawless installation process, a full architectural site drawing is provided with your purchase. This detailed drawing offers precise guidelines and specifications for the proper setup and positioning of the display, ensuring that all aspects of the installation are thoroughly covered. By utilizing this comprehensive resource, you can streamline the installation process, minimize errors, and achieve optimal performance from your display. This thoughtful addition helps ensure a smooth experience, allowing you to focus on delivering engaging content without worrying about technical details.





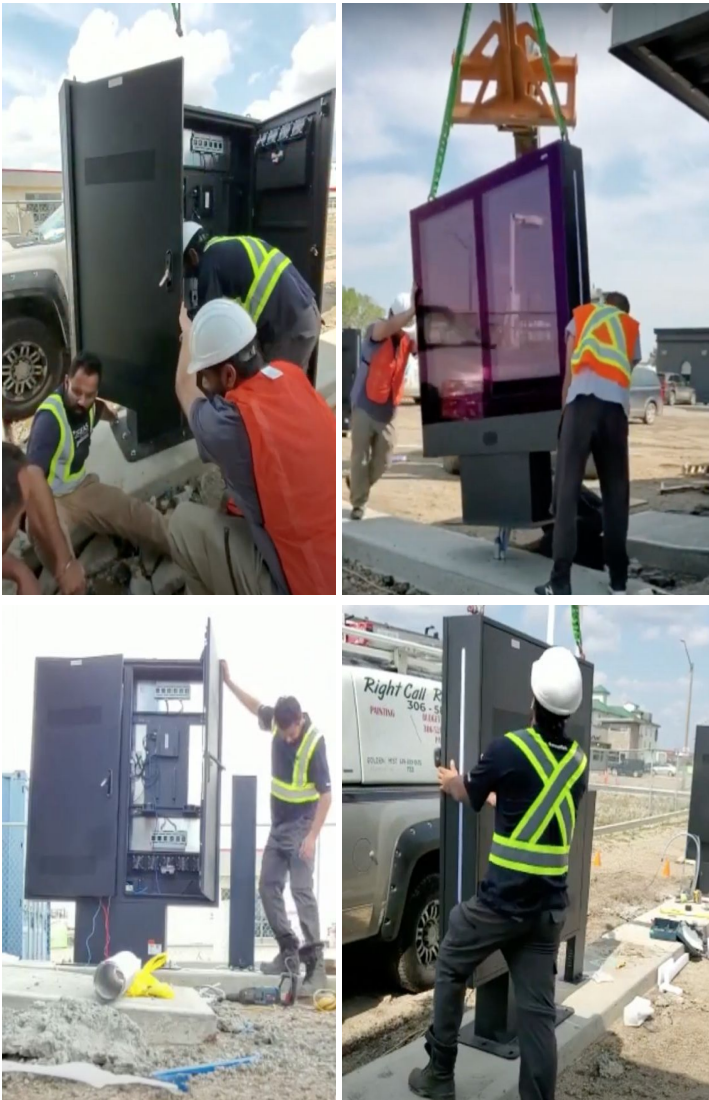
Multiple Input Ports (HDMI, USB)

This unit is equipped with a variety of input ports, including HDMI and USB, providing extensive compatibility with a wide range of multimedia devices. Whether you're connecting media players, computers, cameras, or other peripherals, these input options allow for seamless content integration and playback. The diverse connectivity ensures that the display can easily adapt to different content sources, making it an ideal choice for applications that require flexibility and smooth integration with external devices.

Mounting Base/Stand

This display is designed with a durable and robust mounting base or stand, providing reliable stability and secure placement in any setting. Whether installed in high-traffic areas, outdoor locations, or busy indoor environments, the solid construction ensures the unit remains firmly positioned. Its strong support structure offers peace of mind, allowing for stable installation in a wide variety of locations, making it perfect for both permanent and temporary setups.



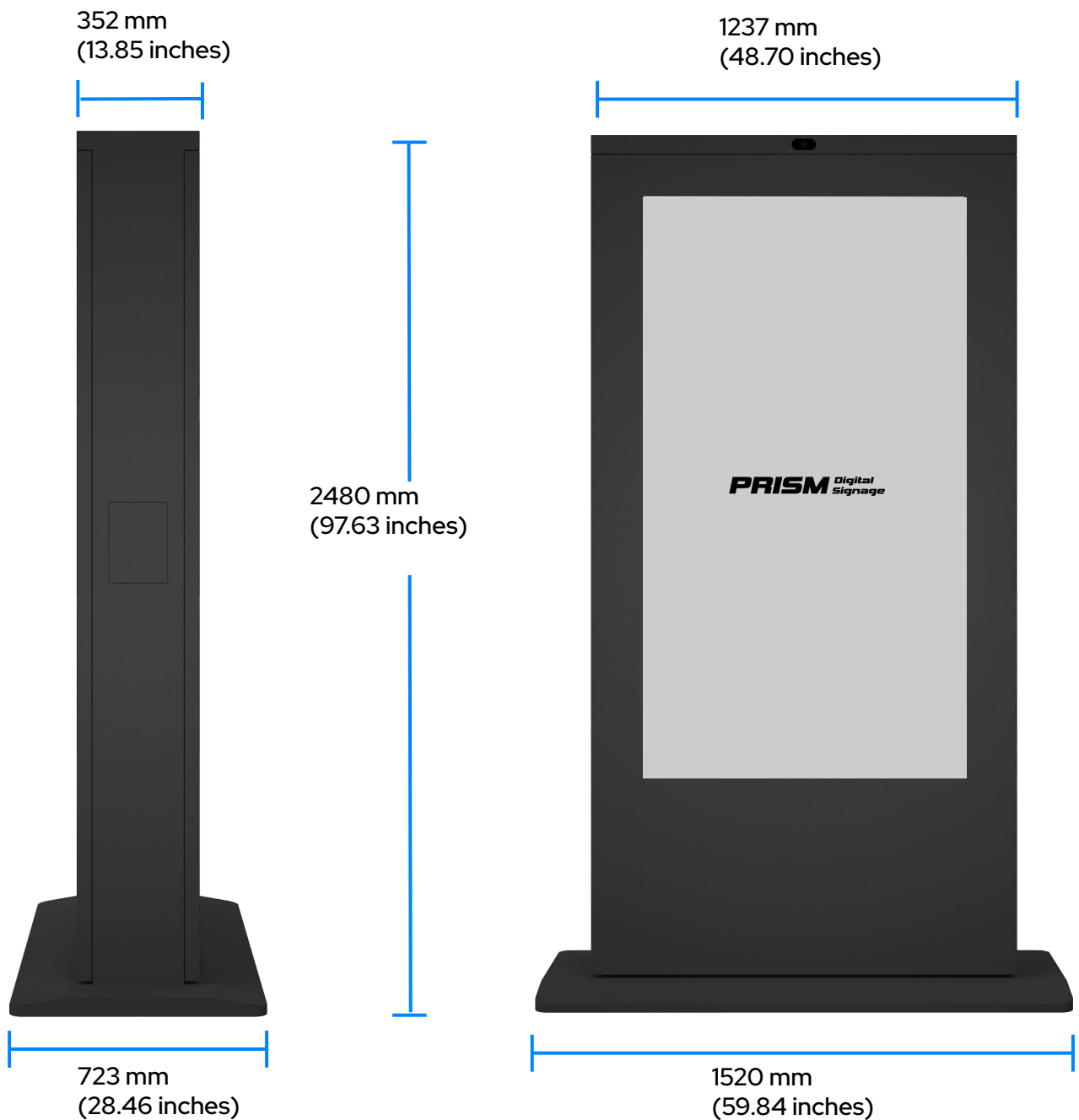


Optional Professional Installation Service for Hassle-Free Setup

For a seamless experience, optional professional installation services are available, offering expert support from start to finish. Our team of trained technicians will handle every aspect of the installation, ensuring your digital signage is set up correctly and ready for immediate use. This service guarantees that your display is deployed with precision and efficiency, allowing you to focus on your business while we take care of the technical details. With our end-to-end installation support, you can rest assured that your signage will perform optimally from day one.

75" Outdoor Brandview Dual Screen Display

Height: 2480 mm (97.63 inches)
Thickness: 352 mm (13.85 inches)
Width: 1237 mm (48.70 inches)
Base Depth: 723 mm (28.46 inches)
Base Width: : 1520 mm (59.84 inches)



75" Outdoor Brandview Single Screen Display

Height: 2620 mm (103.14 inches)
Thickness: 196 mm (7.71 inches)
Width: 1218 mm (47.95 inches)
Base Depth: 723 mm (28.46 inches)
Base Width: : 1234mm (48.58 inches)



PRISM

Shop online with confidence. To check out an online demo of our software, visit our YouTube page.

<https://www.youtube.com/@PRISMDigitalSignage>