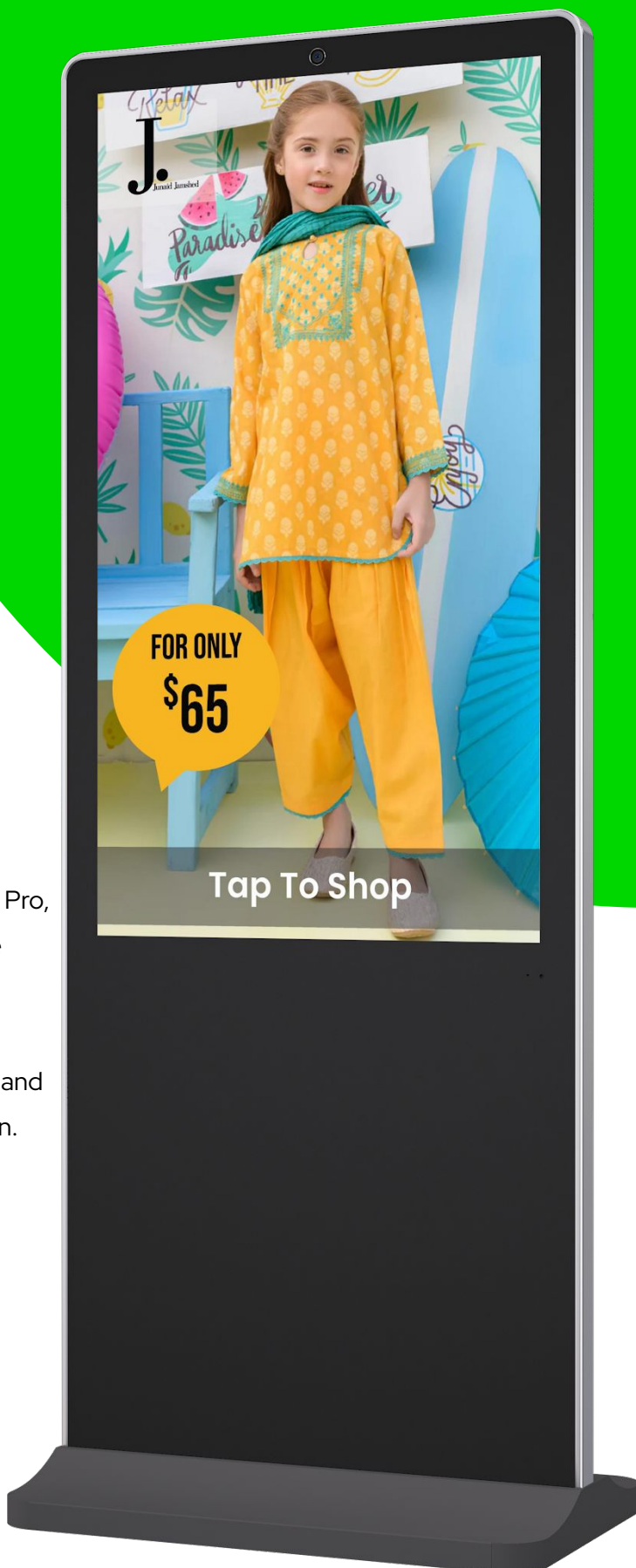


VertiScreen Pro - Touch Screen Free Standing Digital Signage

Elevate your digital communication with the VertiScreen Pro, a sleek and versatile touch screen free-standing signage available in sizes from **32" to 65"**. Ideal for high-traffic environments, it combines a high-resolution display with interactive touch capabilities, delivering stunning visuals and engaging user experiences in a stylish and durable design.



HARDWARE TOP FEATURES



HARDWARE TOP FEATURES



Built-in Camera

Equipped with a high-resolution camera, this digital signage allows for interactive applications such as facial recognition, audience analytics, and enhanced security, providing a dynamic and engaging user experience.



Wi-Fi and Ethernet Connectivity

Enjoy versatile connectivity options with built-in Wi-Fi and Ethernet, allowing for seamless integration, remote content management, and reliable performance in any network environment.



High-Resolution Touchscreen

Experience vibrant visuals and precise touch responsiveness with the high-resolution touchscreen display, designed to deliver crystal-clear images and smooth, interactive engagement for users, enhancing the overall digital experience.



Built-in Speakers

Enjoy clear and immersive audio with integrated high-quality speakers, enhancing the user experience by delivering dynamic sound for videos, advertisements, and interactive content.



Industrial Grade 24/7 Display

Engineered for continuous operation, this industrial-grade display is designed for 24/7 performance, ensuring durability, reliability, and exceptional image quality even in demanding environments, making it ideal for high-traffic and round-the-clock applications.



Sturdy Design for High Traffic Areas

Built with heavy-duty materials, this digital signage features a robust design that withstands frequent use and impacts, ensuring durability and stability in busy environments.



Durable, Easy-to-Clean Glass Surface

The digital signage features a tough, smooth glass surface that resists scratches and stains, making it simple to clean and maintain a pristine, professional appearance.



Integrated Speakers for Clear Audio

Built-in speakers deliver crisp, high-quality sound, enhancing the digital signage experience with clear and engaging audio for videos, announcements, and interactive content.

HARDWARE TOP FEATURES



Energy-Efficient Operation

Designed for low power consumption, this digital signage provides effective performance while reducing energy costs and environmental impact, making it an eco-friendly choice for continuous operation.



Space for Vinyl Wrap or Decal

The digital signage includes ample surface area for customization with vinyl wraps or decals, allowing for personalized branding and aesthetic adjustments to match your business's visual identity.



Multiple Input Ports (HDMI, USB)

Equipped with various input ports, including HDMI and USB, this digital signage allows for versatile connectivity and easy integration with external devices, ensuring flexible content management and display options.



Windows 10 Pro Micro Computer

The signage includes a built-in Windows 10 Pro micro computer, providing powerful and reliable performance for running applications, managing content, and ensuring smooth operation without the need for additional external hardware.



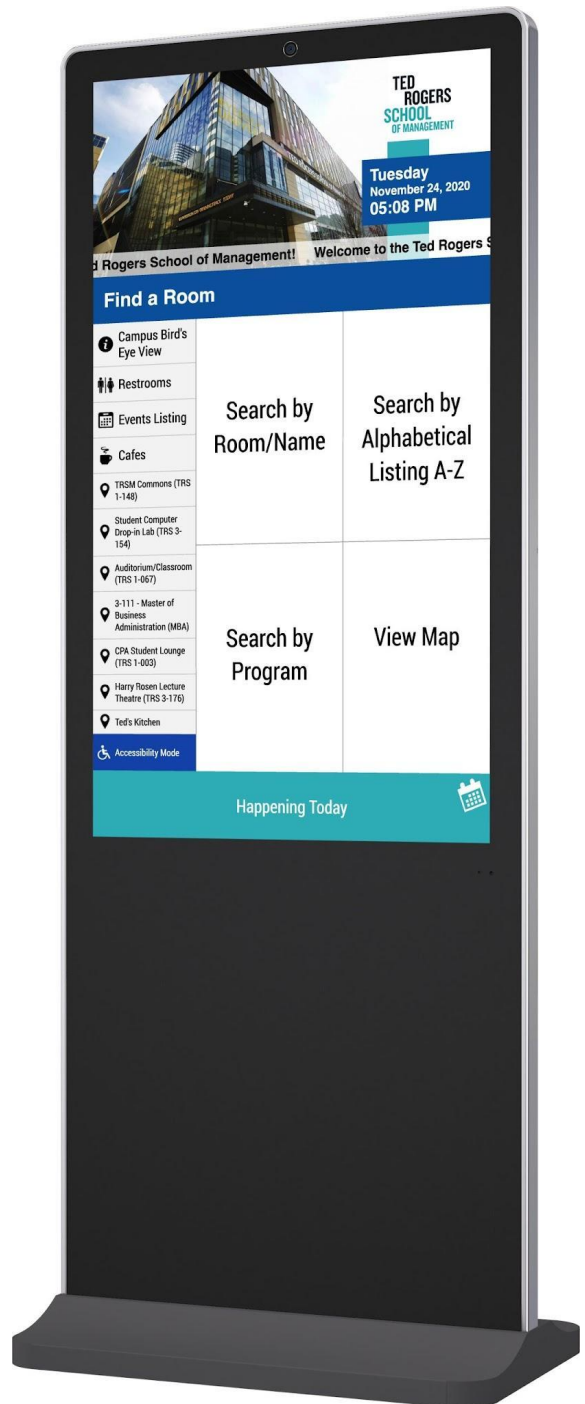
Mounting Base/Stand

The digital signage includes a sturdy mounting base or stand that ensures stable support and secure placement, allowing for easy installation and adjustment in various settings.

PRISM | Hardware Brochure

High-Resolution Touchscreen Display

The Touch Screen Free Standing Digital Signage features a high-resolution touchscreen display that combines stunning visuals with exceptional touch sensitivity for an unparalleled user experience. The display offers vibrant colors, sharp details, and wide viewing angles, making it ideal for displaying dynamic content such as advertisements, interactive menus, or informational graphics. The responsive touchscreen functionality supports multi-touch gestures, enabling smooth and intuitive interactions for users, whether they are navigating through content, filling out forms, or exploring interactive applications. This high-definition display not only captivates audiences with its visual clarity but also enhances engagement and interactivity, making it a powerful tool for any digital signage solution.



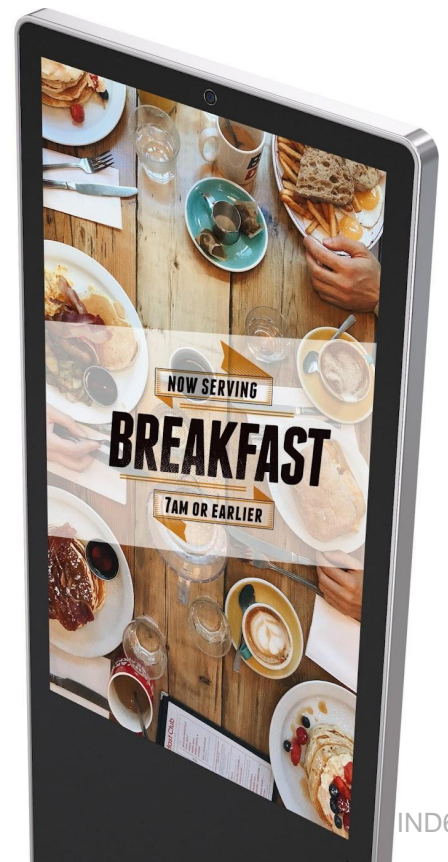


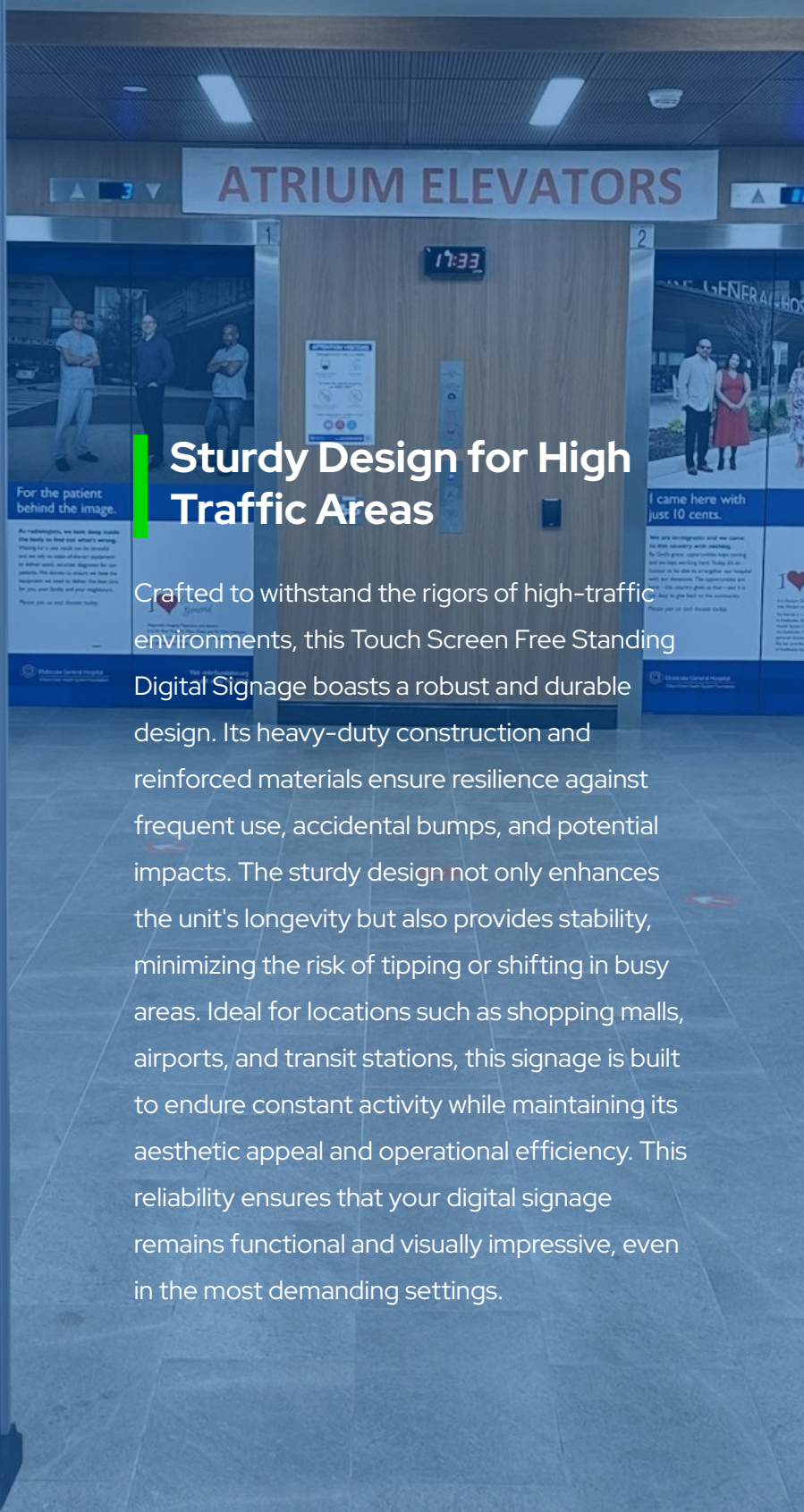
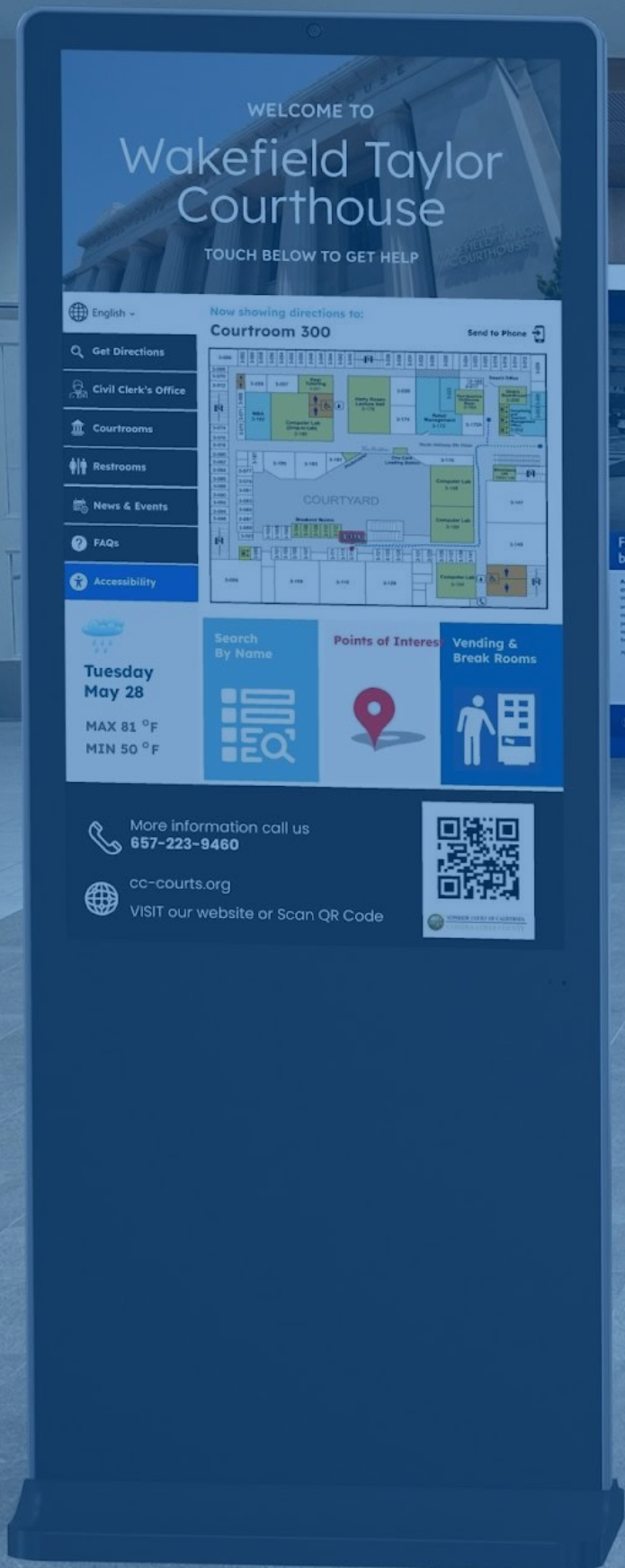
Built-in Camera

The integrated high-resolution camera is a versatile addition to the Touch Screen Free Standing Digital Signage, enabling a wide range of interactive and analytical applications. It allows for facial recognition to tailor content to specific audiences, enhancing personalization and engagement. Additionally, it can be used for audience analytics, gathering data on user demographics, viewing patterns, and engagement levels, which is invaluable for targeted advertising and content optimization. The camera also enhances security by supporting applications such as video monitoring and access control. With this built-in camera, businesses can leverage cutting-edge technology to create immersive, interactive, and secure digital signage solutions.

Built-in Speakers

The Touch Screen Free Standing Digital Signage is equipped with high-quality built-in speakers, delivering clear and immersive audio that complements the visual content. These integrated speakers enhance the overall user experience by providing dynamic sound for videos, advertisements, and interactive applications, making the signage more engaging and effective in capturing attention. The audio quality is optimized for a variety of environments, ensuring consistent performance whether in a quiet office setting or a bustling public space. By combining visual and auditory elements, the built-in speakers help create a multi-sensory experience that drives deeper engagement and reinforces your message.





Sturdy Design for High Traffic Areas

Crafted to withstand the rigors of high-traffic environments, this Touch Screen Free Standing Digital Signage boasts a robust and durable design. Its heavy-duty construction and reinforced materials ensure resilience against frequent use, accidental bumps, and potential impacts. The sturdy design not only enhances the unit's longevity but also provides stability, minimizing the risk of tipping or shifting in busy areas. Ideal for locations such as shopping malls, airports, and transit stations, this signage is built to endure constant activity while maintaining its aesthetic appeal and operational efficiency. This reliability ensures that your digital signage remains functional and visually impressive, even in the most demanding settings.

Durable Build Quality for Long-Lasting Performance

Featuring a portable and lightweight design, this display is easy to move and position, making it an excellent choice for dynamic retail spaces. Its mobility allows businesses to effortlessly adjust the display's location to suit different layouts, promotional needs, or foot traffic patterns, enhancing flexibility and operational efficiency. Whether you need to showcase products in different areas of your store, create pop-up experiences, or adapt to seasonal displays, this display's convenient portability ensures that you can always position it exactly where it will have the most impact, maximizing visibility and engagement.





Industrial Grade 24/7 Display

This Touch Screen Free Standing Digital Signage features an industrial-grade 24/7 display, meticulously engineered to deliver uninterrupted performance in demanding environments. Built for continuous operation, the display ensures reliability and durability, capable of running around the clock without overheating or experiencing performance degradation. Its robust construction and advanced cooling systems allow it to withstand high-traffic areas and harsh conditions, making it ideal for environments where consistent, high-quality visual output is crucial. Whether used in retail, transportation hubs, or public spaces, the industrial-grade display maintains exceptional image clarity and color accuracy, ensuring that your digital signage remains effective and engaging at all times



Wi-Fi and Ethernet Connectivity

This Touch Screen Free Standing Digital Signage offers flexible connectivity options with both Wi-Fi and Ethernet capabilities, ensuring seamless integration into any network environment. The Wi-Fi connectivity provides the convenience of wireless operation, allowing for easy installation without the need for extensive cabling, ideal for dynamic or high-traffic locations. Ethernet connectivity, on the other hand, ensures a stable and reliable connection, crucial for uninterrupted content delivery and real-time updates. These dual connectivity options make it effortless to manage content remotely, access cloud-based applications, and monitor system performance, providing a robust and adaptable solution that keeps your digital signage up-to-date and fully operational at all times.

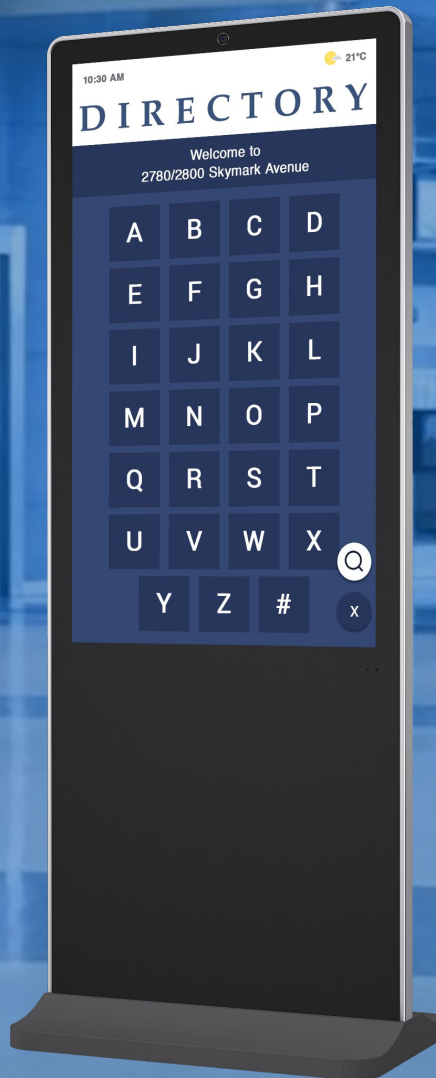
Windows 10 Pro Micro Computer

Integrated within the digital signage is a Windows 10 Pro micro computer, delivering robust computing power and versatile functionality. This embedded system runs on the reliable and familiar Windows 10 Pro operating system, which supports a wide range of applications and software essential for managing and displaying content effectively. The micro computer provides seamless performance for tasks such as content scheduling, remote management, and interactive applications, eliminating the need for external computing devices and streamlining setup. With its advanced security features, such as BitLocker encryption and secure boot, Windows 10 Pro ensures that your data and applications are protected. This integrated solution offers a compact, efficient, and user-friendly experience, making it ideal for various business and public environments where high-performance computing and ease of use are critical.



Energy-Efficient Operation

The Touch Screen Free Standing Digital Signage is engineered with energy efficiency in mind, featuring advanced technologies that minimize power consumption while delivering optimal performance. Its energy-efficient design reduces electricity usage, which not only lowers operational costs but also supports environmental sustainability by reducing the overall carbon footprint. This efficient operation is achieved through components such as LED backlighting and optimized power management systems that adjust energy use based on display activity and ambient conditions. Whether used for extended periods or in high-traffic environments, the signage maintains a low environmental impact without compromising on brightness or functionality, making it a smart and responsible choice for businesses committed to both cost savings and eco-friendly practices.



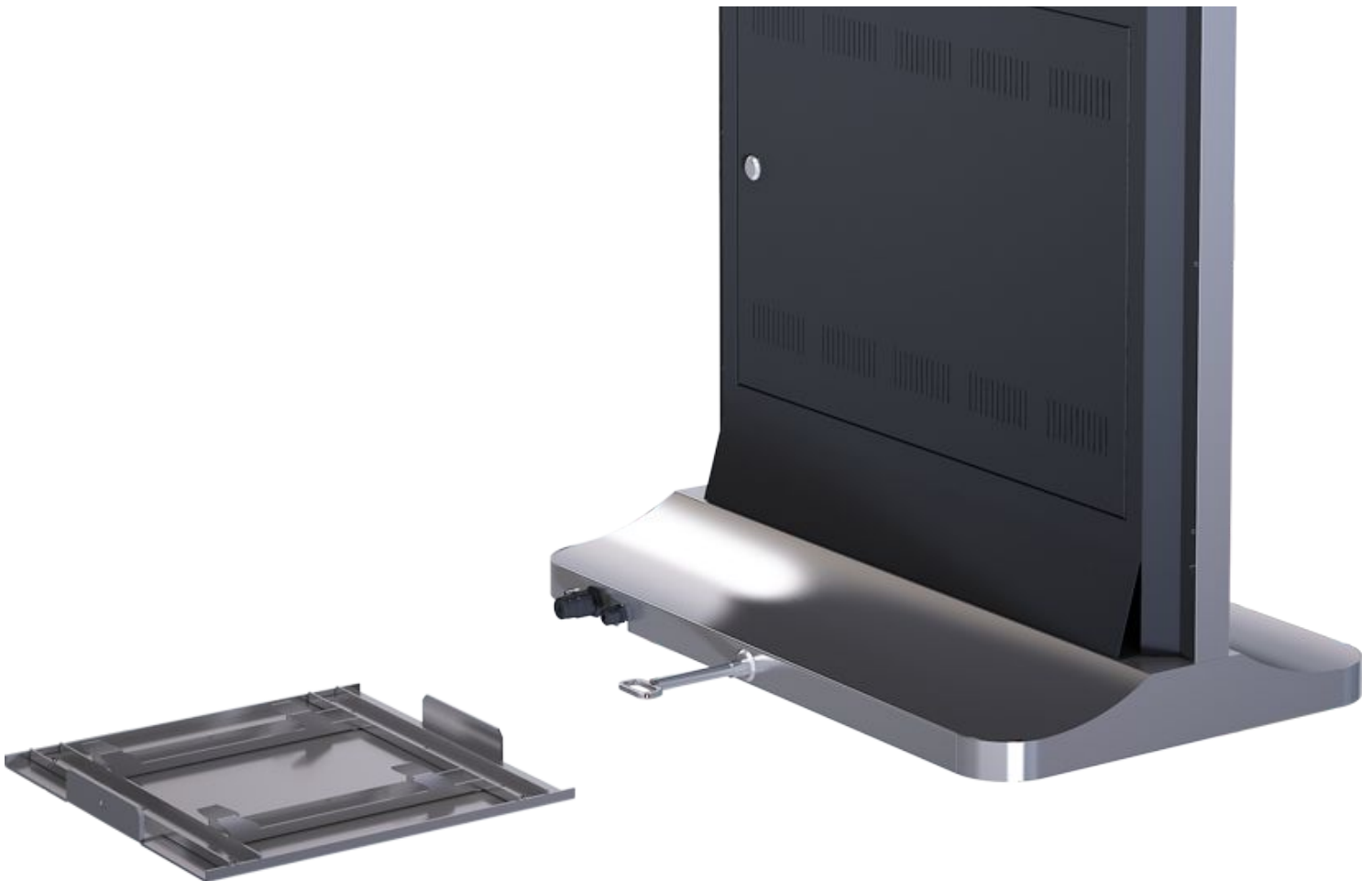


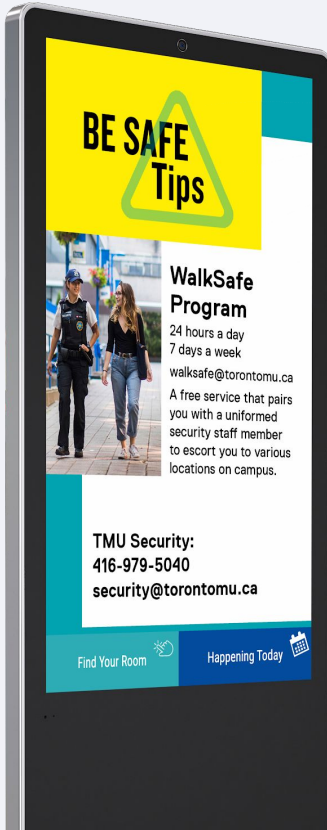
Space for Vinyl Wrap or Decal

This Touch Screen Free Standing Digital Signage offers ample surface area designed for easy customization with vinyl wraps or decals. The expansive, smooth exterior allows for effortless application of custom graphics, logos, or promotional messages, enabling you to tailor the signage to align with your brand's visual identity or specific marketing campaigns. The space is optimized to ensure that the vinyl or decal adheres securely and maintains a professional appearance, without interfering with the functionality or visibility of the screen. This feature provides a versatile solution for businesses looking to enhance their signage with personalized designs, making it a perfect choice for creating a cohesive and eye-catching presentation that captures and reinforces your brand's image in any setting.

Mounting Base/Stand

The Touch Screen Free Standing Digital Signage is equipped with a robust mounting base or stand designed to provide stable support and secure placement in a variety of environments. The base is engineered for durability, ensuring that the signage remains upright and steady even in high-traffic areas. Its design allows for easy installation and adjustment, accommodating different viewing angles and heights to optimize visibility and user interaction. The stand often features adjustable components or locking mechanisms that enable precise positioning and prevent unintended movement. Additionally, the sleek and modern design of the base or stand complements the aesthetics of the digital signage, blending seamlessly with both contemporary and traditional interiors. This feature ensures that the signage is both functional and stylish, providing a reliable foundation that enhances the overall presentation and effectiveness of your digital content.





Multiple Input Ports (HDMI, USB)

The HDMI port supports high-definition video and audio, enabling straightforward connection to sources such as computers, media players, and gaming consoles for crisp, clear display. The USB ports provide additional flexibility, allowing for easy transfer of media files, software updates, and peripheral connections. This multi-port capability ensures that the signage can adapt to diverse content and technology needs, making it an ideal solution for dynamic environments where different media sources and devices are used. Whether for presenting presentations, playing videos, or updating content, the multiple input ports enhance the signage's functionality and ease of use.

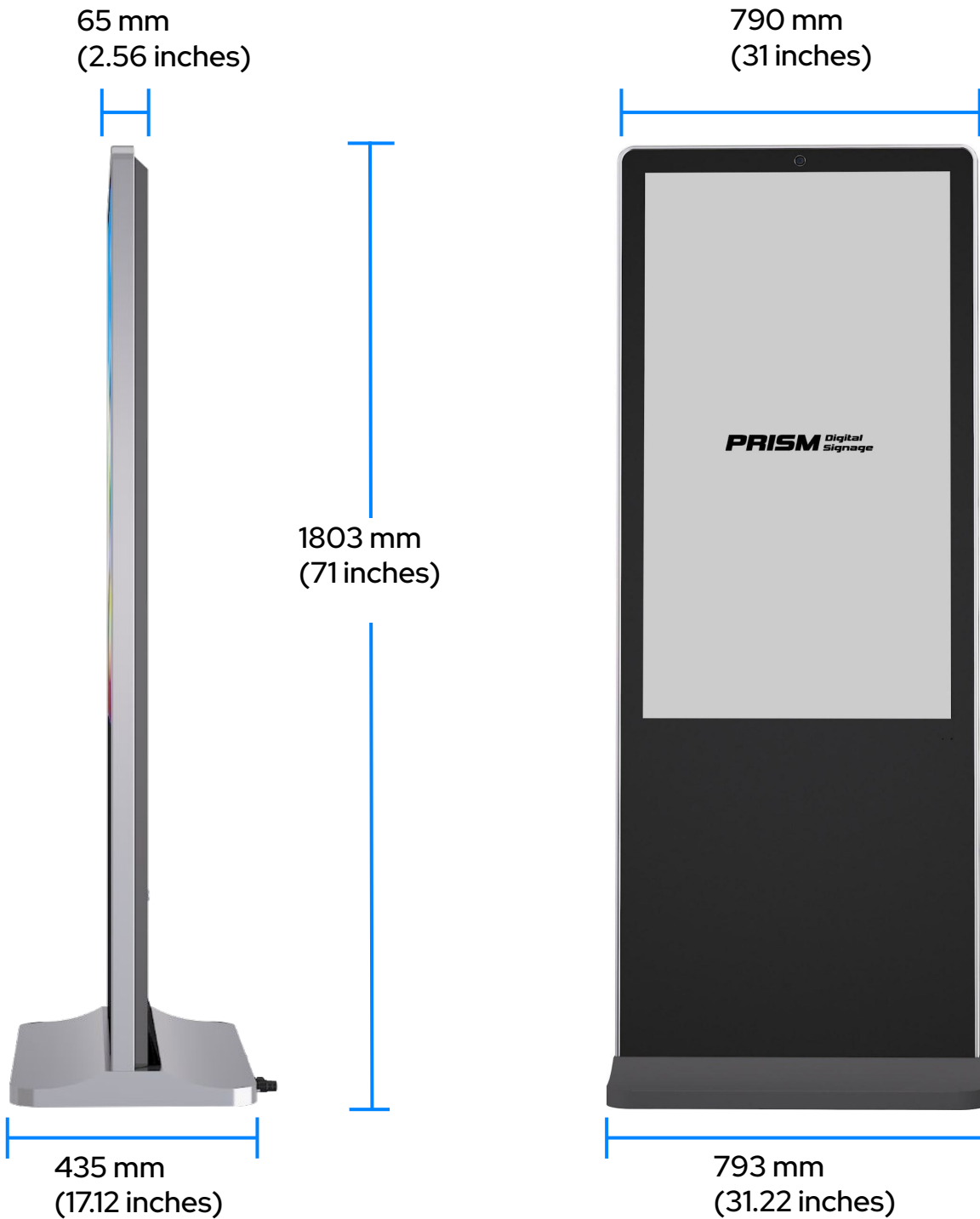
Durable, Easy-to-Clean Glass Surface

The digital signage boasts a premium glass surface that is both highly durable and exceptionally easy to maintain. Engineered to resist scratches, impacts, and everyday wear, the glass ensures long-lasting clarity and performance even in high-traffic environments. Its smooth, non-porous finish allows for effortless cleaning, requiring just a simple wipe with a soft cloth and standard glass cleaner to remove fingerprints, dust, and smudges. This low-maintenance design not only keeps the signage looking pristine and professional but also ensures that it remains functional and visually appealing over time. Ideal for busy public spaces, the durable glass surface provides both durability and ease of upkeep, contributing to the signage's overall reliability and aesthetic quality.



55" VertiScreen Pro Dimensions

Height: 1803 mm (71 inches)
Thickness: 65 mm (2.56 inches)
Width: 790 mm (31 inches)
Base Depth: 435 mm (17.12 inches)
Base Width: : 793 mm (31.22 inches)



PRISM

Shop online with confidence. To check out an online demo of our software, visit our YouTube page.

<https://www.youtube.com/@PRISMDigitalSignage>